

THIS COULD BE YOUR STORY



OCTOBER 2022

**OPEN DAY
PROGRAMME**



A warm welcome to the University of Southampton.

During your visit today, I hope you'll take the time to soak up as much as possible and make the most of chatting with the people you meet. This is your chance to find out what it would be like to join us for the next part of your life's journey.

Learn more about how we support and empower our students, speak with lecturers and peers, enjoy our spaces and allow yourself to imagine life at Southampton.

I really recommend finding time to attend our subject talks, which will give you the opportunity to discover more about studying your passions with us.

Don't forget to spend a moment in our bustling and exciting city, too. This is an ideal time to explore your prospective new home.

Today will provide a glimpse of what your future could hold. Being a Southampton student means being part of a community that will be there right alongside you as you grow, learn and realise your potential.

I do hope you'll join us.

Kieron Broadhead
Executive Director of Student Experience

Follow us on social media
Search #UoSOpenDay

OPEN DAY SHUTTLE BUSES

During your visit you can enjoy unlimited travel between our Southampton campuses using our free shuttle bus service.

Show your Open Day ticket or programme for free travel on our shuttle buses and Unilink services.

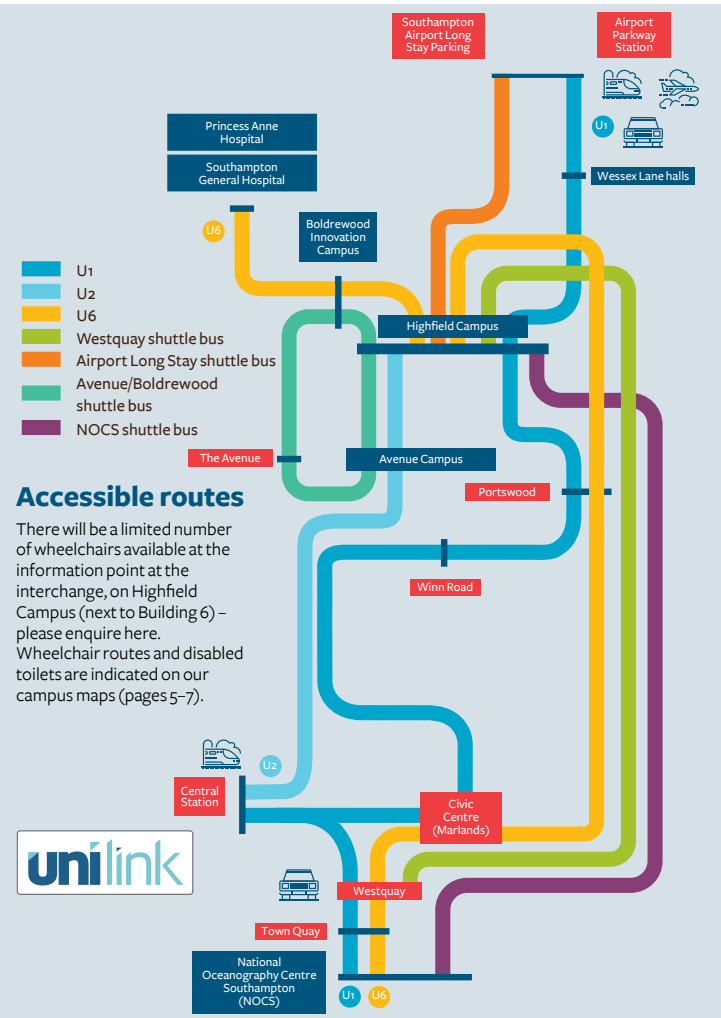
Catch a direct shuttle bus at Southampton Airport (Long Stay parking), Southampton Airport Parkway train station, Westquay or Southampton Central train station and go straight to Highfield Campus.

From Highfield Campus, you can catch a shuttle bus to the National Oceanography Centre Southampton (NOCS), Boldrewood Innovation Campus, and Avenue Campus.

Our award-winning Unilink bus service connects our Southampton campuses with the city's major transport links. Our student ambassadors will be happy to provide you with directions onto the correct bus.

If you have time, head to Southampton's vibrant city centre to explore all it has to offer. A Unilink bus to Westquay shopping centre takes around 30 minutes.

Make sure you allow plenty of time to travel between locations.



Accessible routes

There will be a limited number of wheelchairs available at the information point at the interchange, on Highfield Campus (next to Building 6) – please enquire here. Wheelchair routes and disabled toilets are indicated on our campus maps (pages 5-7).

APPROXIMATE TRANSFER TIMES

AIRPORT (LONG STAY PARKING):
Avenue Campus **45 minutes***

Boldrewood Innovation Campus **40 minutes***
Highfield Campus **25 minutes**

National Oceanography Centre Southampton (NOCS) **1 hour 15 minutes***

SOUTHAMPTON CENTRAL TRAIN STATION TO:

Avenue Campus **35 minutes***
Boldrewood Innovation Campus **30 minutes***

Highfield Campus **25 minutes**
National Oceanography Centre Southampton (NOCS) **20 minutes**
(Catch the U1C Unilink service)

HIGHFIELD CAMPUS TO:
Avenue Campus **10 minutes**

Boldrewood Innovation Campus **5 minutes**
National Oceanography Centre Southampton (NOCS) **45 minutes**

AIRPORT/PARKWAY TRAIN STATION TO:

Avenue Campus **40 minutes***
Boldrewood Innovation Campus **35 minutes***

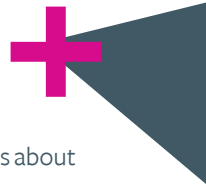
Highfield Campus **20 minutes**
National Oceanography Centre Southampton (NOCS) **1 hour 10 minutes***

WESTQUAY TO:
Avenue Campus **20 minutes**

Boldrewood Innovation Campus **25 minutes**
Highfield Campus **35 minutes**
National Oceanography Centre Southampton (NOCS) **15 minutes**

* One change at Highfield Campus

SUBJECT HUBS



Chat with staff and current students to hear about their experiences and ask questions about your chosen subject. Check out the maps on pages 5–7 for subject hub locations.

HIGHFIELD CAMPUS

HUB LETTER	SUBJECT HUB NAME	SUBJECTS
A	Art and Music	Music Winchester School of Art*
B	Geography and Environmental Sciences	Environmental Science Geography
C	Ocean and Earth Science, and Natural Sciences	Environmental Geoscience Geology Marine Biology Natural Sciences Oceanography
D	Biological Sciences and Foundation Year (Science)	Biochemistry Biology Biomedical Sciences Neuroscience Pharmacology Foundation Year (Science) Zoology
E	Mathematics	Mathematics
F	Physics and Astronomy	Physics and Astronomy
G	Psychology	Psychology
H	Business	Accounting and Finance Business Finance and Financial Technology Marketing
J	Law	Law
K	Social Sciences	Criminology Economics Education Politics and International Relations Population Sciences Sociology
L	Health Sciences	Cardiac Physiology Nursing Midwifery Occupational Therapy Physiotherapy Podiatry

HIGHFIELD CAMPUS CONT.

HUB LETTER	SUBJECT HUB NAME	SUBJECTS
M	Medicine	Medicine
N	Electronics and Computer Science	Aerospace Electronic Engineering Computer Science and Software Engineering Electrical and Electronic Engineering Mechatronic Engineering
O	Engineering and Chemistry	Acoustical Engineering Aeronautics and Astronautics Chemical Engineering Chemistry Engineering Foundation Year Mechanical Engineering
Q	Audiology	Audiology
R	Biomedical Engineering	Biomedical Engineering

AVENUE CAMPUS

HUB LETTER	SUBJECT HUB NAME	SUBJECTS
S	Humanities Hub One	English English Language and Linguistics Film Studies Modern Languages and Linguistics
U	Humanities Hub Two	Ancient History Archaeology History Philosophy

BOLDREWOOD INNOVATION CAMPUS

HUB LETTER	SUBJECT HUB NAME	SUBJECTS
V	Engineering	Aeronautics and Astronautics Civil Engineering Mechanical Engineering Ship Science

*Please note that our Winchester School of Art has separate Open Days at our Winchester campus. Representatives from the school will be at the subject hub for anyone interested in courses based at Winchester.

CAMPUS MAPS

Highfield Campus is our main campus and caters for most of our academic courses. Here you'll find state-of-the-art research and teaching facilities, as well as the Students' Union, Jubilee Sports Centre, Turner Sims concert hall, several cafes and bars to relax in, and plenty of open, green space.



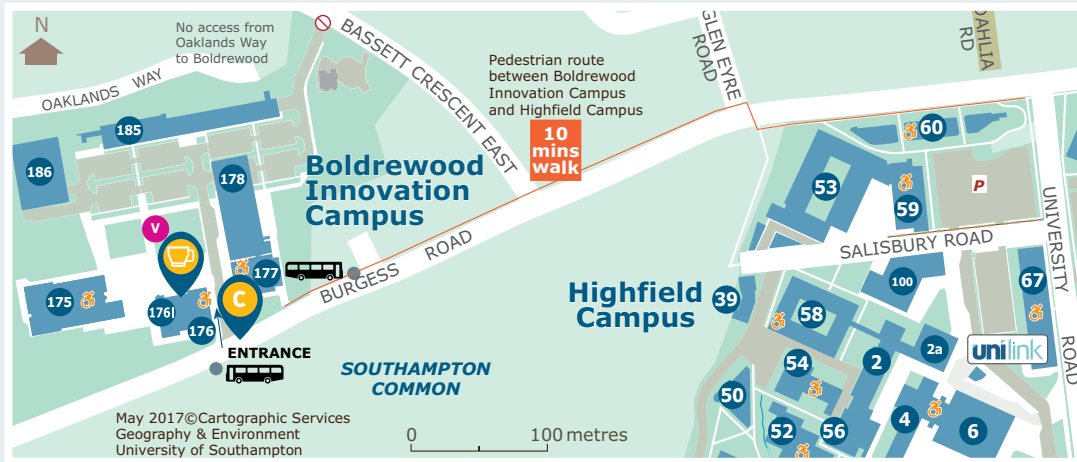
KEY

- 18** Building numbers
- Footpaths
- Highfield Interchange
- Locked Bicycle storage
- SLH** Student Life Hub
- K** Subject hub
- C** Check in
- I** Information Point
- Catering Outlet
- T** Campus Tours
- Entertainment
- First Aid
- P** Blue Badge parking
- Toilets for disabled persons (with wheelchair access)
- Accessible payphone
- Wheelchair route (unaided)
- Wheelchair route (with assistance)
- R** Ramp



Boldrewood Innovation Campus route to Highfield Campus

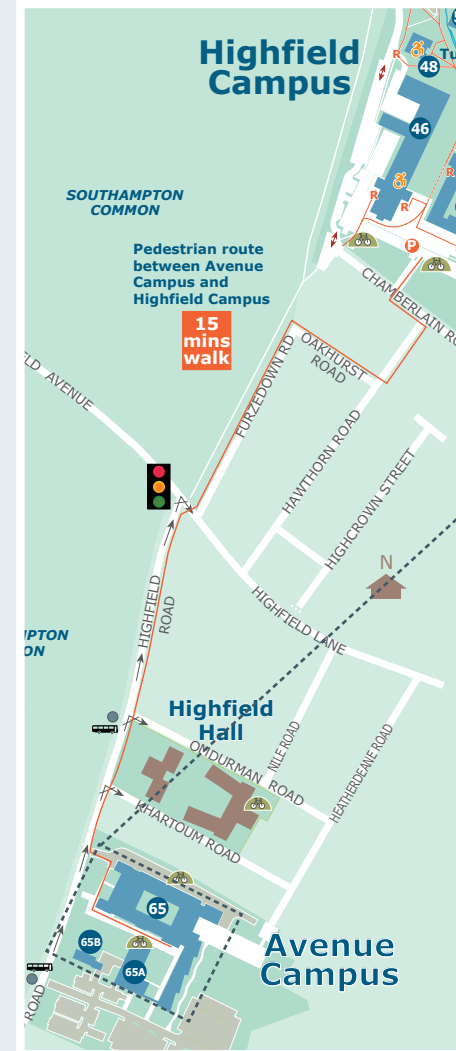
A short walk from Highfield Campus, our Boldrewood Innovation Campus houses our centre for innovation, business and education in maritime engineering and engineering sciences.



Avenue Campus maps

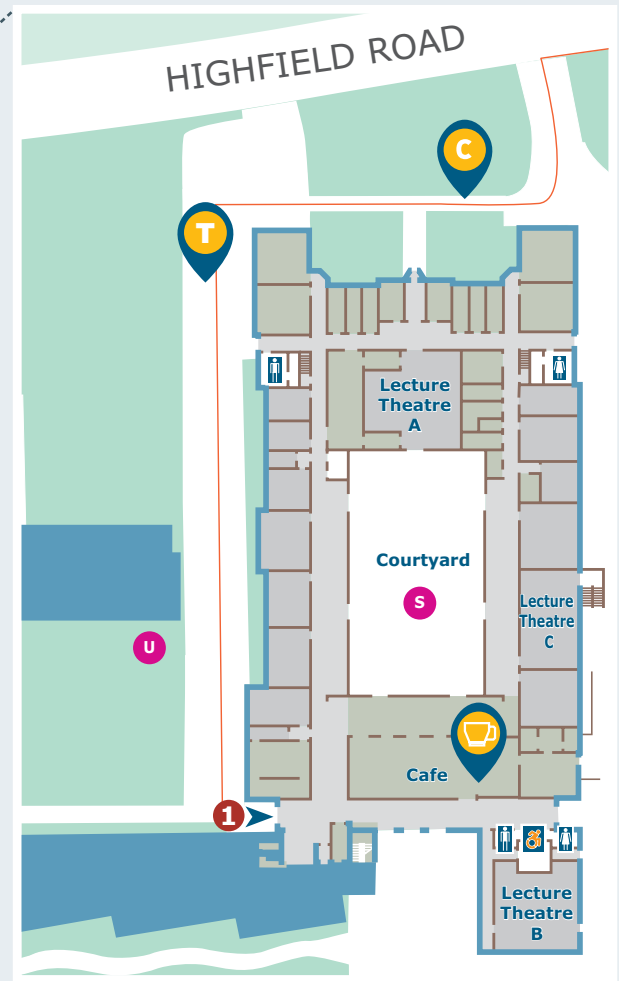
Our humanities campus houses a state-of-the-art purpose-built Archaeology Building and is located on the edge of Southampton Common, a short walk from Highfield.

If you are arriving at Avenue by bus, you will be dropped off and picked up on The Avenue (A33). Look out for student ambassadors who will direct you between the bus stop and the campus.



KEY

- 1 Main entrance



National Oceanography Centre Southampton (NOCS)

Our waterfront campus is one of the world's leading research centres for the study of ocean and Earth sciences.

Pre-booked parking is available at NOCS for those interested in subjects based at the waterfront campus. NOCS can be accessed via our shuttle bus service from Highfield Campus, and from Southampton Central Station using the U1C Unilink service. Student ambassadors will be available to direct you to the correct bus.



Boldrewood Innovation Campus



National Oceanography Centre Southampton

PLAN YOUR DAY

Planning ahead can help you to make the most of your Open Day. Here are some handy things to remember. We hope you enjoy your visit.

Don't forget to check in

Let us know you've arrived. Head to one of our check-in points to get your ticket scanned, or click the check-in button in your ticket email.

See our city

Make the most of your day by visiting Southampton city centre via one of our regular shuttle buses. You can explore the city, enjoy something to eat or drink, see a show at the Mayflower Theatre or catch the latest exhibition at our very own John Hansard Gallery. If you don't have time, view our 360-degree virtual city experience in the Centenary Building (Building 100).

Take time to relax

We know you'll want to pack in as much as you can, but make sure you find time to enjoy the atmosphere. Head to the food festival or one of our cafes to grab a bite to eat, or why not sit back and soak up our beautiful green spaces? Catering information can be found on page 11.



Reuse, reduce, refill

Bring your refillable water bottles with you. You can use our water tank on Highfield Campus to stay hydrated during your visit and do your bit for the planet.



Plan it your way

Browse through our timetable of activities on page 14 and decide in advance what you want to prioritise. You can do as much or as little as you'd like, so don't worry if you can't make it to everything. Remember to leave plenty of time for getting to and from our campuses; see page 3 for travel details.



Get online

Use the free Wi-Fi on campus to stay connected. Simply select 'Wifi Guest' and follow the instructions.



Please note that filming and photography will be taking place at the Open Days for use in University publications and on the University website. If you do not wish to be included, please let the film crew or photographer know.

Follow us on social media

Find us online, share your experience and join the conversation with #UoSOpenDay.

PROGRAMME HIGHLIGHTS

There's so much going on at our Open Days. Here are some programme highlights that you won't want to miss.

Subject talks

Your subject talk will offer you an insight into your chosen course at Southampton. Find out what makes us different, be inspired by our world-leading academics and hear about some of the exciting opportunities open to you. This is an essential part of your Open Day, so make sure you schedule it in.

Subject hubs

Our subject hubs give you the chance to speak with the people that know your chosen subject the best. Our friendly ambassadors and knowledgeable academics will be on hand throughout the day to chat and answer your questions. No question is too big or small; make the most of this opportunity to gain further insight into your course. Find out more about subject hubs on page 4.

The Student Life Hub

At our Student Life Hub, you can speak with the services that will be supporting you throughout your student journey. From accommodation to careers, and study abroad to wellbeing, our teams will be on hand to answer your questions between 09:00-16:00. Find out more on page 12.

Accommodation tours

Moving away from home is a huge part of university life, and can be both daunting and exciting. Our friendly accommodation team can answer your questions about the process and help put your mind at ease. Chat to the team in the Student Life Hub, then see our accommodation for yourself. Our Wessex Lane halls site is open for viewing, with a range of bedrooms for you to see. Learn more on page 10.

Welcome talks

Hear from our Executive Director about what makes Southampton a special place to live and study. This is your introduction to life at the University of Southampton. For times and locations, see page 14.



Meet our students

Throughout the day you'll meet many of our friendly current students. Make sure you take time to chat to them and ask them about their experiences at Southampton, from studying to socialising. They can really help you to imagine what your life could be like here.



ACCOMMODATION TOURS

Make time to stop by Wessex Lane halls to see examples of the range of room types we have on offer.

As well as the sites open today, we also have many other halls of residence available for you to apply to live in.

Chat with our accommodation team in the Student Life hub to learn more about living in halls.

Special requirements

If you have any special requirements for your room, or need an adapted room, please speak to our Accommodation team or visit our website.

Wessex Lane

Open for viewing between 11:00 and 17:00.

Explore more online

Watch our online webinars and video tours to find out more about your accommodation options and how to apply:

www.southampton.ac.uk/virtualhalls

Travelling to Wessex Lane

To get to Wessex Lane halls, we recommend travelling by bus.

Board the U1A at Highfield Interchange (showing your Open Day ticket or programme for free travel) and alight at Montefiore House bus stop. Use the bus stop on the other side of the road to catch the U1C to return to Highfield Campus.



“ Staying in University accommodation is one of the best choices I’ve made. The other students are lovely and extremely friendly, while the staff are also willing to help when needed. Making friends is also so much easier than I thought; everyone is always looking to make new friends and meet new people.”

Fleur Flanagan (she/her)
BA History with Year Abroad, first year



CATERING FACILITIES

Open Days are busy, so make sure you find time to take a break and enjoy some tasty snacks, meals, and refreshments. There’s something for everyone across our campuses to fuel you throughout the day.

VENUE	OPENING TIMES	REFRESHMENTS AVAILABLE	LOCATION
HIGHFIELD CAMPUS			
Food festival	11:00–15:00	Campus Kitchen barbecue, stonebaked pizza, and a range of other freshly cooked hot options	Outside Building 38
The Arlott Bar	09:00–16:00	Triple-certified barista coffee, cold drinks, hot bowl food	Building 38
The Lounge Cafe	08:00–16:00	Hot and cold drinks, sandwiches, snacks, and hot food	Building 38
Starbucks Library	09:00–16:00	Starbucks specialist drinks, Chicago Town pizza, hot food, sandwiches, sushi, pastries, and snacks	Building 36
Cafe 85	09:00–14:00	Hot and cold drinks, sandwiches, and snacks	Building 85
Interchange kiosk	08:00–15:00	Hot and cold drinks, sandwiches, and snacks	Bus interchange
The Shop	09:00–16:00	Great value and convenience for a range of groceries, sandwiches and snacks	Building 57
The Bridge	09:00–16:00	Breakfast sandwiches, pastries, toasties, paninis, soup and jacket potatoes	Building 42
La Piazza food court	10:30–15:00	Breakfast offers, Big Al’s Burgers, Love Joes Chicken and 4ork Street Food	Building 42
La Piazza Coffee House	10:00–15:00	Barista-made hot drinks, sandwiches, pastries and snacks	Building 42
The Plant Pot	11:00–15:00	The home of vegetarian and vegan food	Building 42
The Stag’s	12:00–17:00	Our student pub. Food includes pizza, wings, loaded nachos and hot dogs	Building 40
Pret A Manger	08:00–16:00	Organic coffee and freshly made food including sandwiches, baguettes, and salads	Building 60
Costa Coffee	09:00–16:00	Hot drinks, pastries, breakfast rolls, sandwiches, toasties, paninis, and cakes	Building 60
AVENUE CAMPUS			
Avenue Cafe	09:00–15:00	Barista-style hot drinks, cold drinks, selection of hot food, sandwiches, cakes, and snacks	Building 65
Barbecue	11:00–15:00	Serving meat and vegetarian barbecue snacks	Building 65
BOLDREWOOD INNOVATION CAMPUS			
Boldrewood Cafe	09:00–15:00	Hot and cold drinks, sandwiches, and snacks	Building 176
NATIONAL OCEANOGRAPHY CENTRE SOUTHAMPTON (NOCS)			
NOCS Pop-up	10:00–15:00	Hot and cold drinks, sandwiches, hot food, cakes, and snacks	National Oceanography Centre Southampton (NOCS), Level 4
WESSEX LANE HALLS OF RESIDENCE			
The Boiler House	11:00–15:00	Hot and cold drinks, sandwiches and snacks	Montefiore halls

STUDENT LIFE HUB



At the Student Life Hub you can find out more from our support teams about the services and opportunities available to you as a student. This is a great opportunity to ask your questions and discover the different ways we look out for our community here at Southampton.

The Student Life Hub is open 09:00–16:00.

You can expect to learn more about a range of topics and University teams, including:

- Accommodation
- Study Abroad and Exchange
- Admissions
- Wellbeing
- Art and culture
- Academic Skills Service
- Careers, Employability and Student Enterprise
- Faith and Reflection Centre
- Ignite your success
- University libraries
- The Student Hub
- Making your money work for you
- Student Inclusion
- Year in Industry
- Student Disability and Inclusion



Your Students' Union

When you join the University, you automatically become a member of the Students' Union, which is independent of the University. Run by students, its purpose is to unlock the potential and enrich the life of every student.

Representatives from the University of Southampton's Students' Union (SUSU) will also be in Building 42, ready to speak with you about what they can offer.

Whether you love sport, volunteering, sustainability, debating or performing, there's something for everyone in our range of clubs and societies. This could be your chance to try something new.



SUSU offers
over 300
clubs and societies

Find out more:
www.susu.org

Introducing the Student Hub

The Student Hub is the first point of contact for student questions and concerns relating to fees, financial support, accommodation, wellbeing, disability, careers and course administration. They're contactable 24/7 by using the online chat, by email or by telephone, and are there for you throughout your time as a student at Southampton.

Find the team at the Student Life Hub during your visit to learn more about how they can support you.

Admissions Corner

You can meet our Admissions team in Admissions Corner as part of the Student Life Hub. Get bespoke advice on your application, including information about entry requirements, writing your personal statement and more.

You'll find separate admissions advice points for Medicine and Health Sciences at their subject hubs. There's also an admissions advice point located at Avenue Campus for the subjects based there. Please see the Open Day timetable on page 14 for more details.

Sport and Wellbeing

During your time at Southampton, you may want to get active; whether that's by going to the gym, joining a team, or taking part at a competitive level. We cater for all levels of sporting skill, and everyone is welcome. Visit Building 42, where you can chat to our Sport and Wellbeing team, as well as members of some of our sports clubs, to discover more about keeping fit and having fun at Southampton.

GENERAL EVENTS

TALKS	TIMES	DURATION	LOCATION*
Welcome to the University: your chance to hear from our Executive Director about what makes Southampton a special place to study	09:45 12:30	30 minutes	Turner Sims Concert Hall (Building 52)
	09:15 10:00		Centenary Building (Building 100), Lecture Theatre A
	10:45 13:15		The Annex (Building 2A), Lecture Theatre H
Accommodation	09:15 10:45 12:15 13:00 13:45 15:15	30 minutes	Students' Union (Building 42), Cinema
Money Matters: Financing your degree at Southampton (this talk is aimed at those who are eligible for Student Finance)	10:00 13:30 14:30	45 minutes	Education (Building 34), Lecture Theatre
Sport at Southampton	10:45 13:00	30 minutes	Centenary Building (Building 100), Room 3023
Studying abroad	11:30 14:00	35 minutes	Centenary Building (Building 100), Room 3023
Student life with the Students' Union	10:00 11:30 14:30	30 minutes	Students' Union (Building 42), Cinema
Personal statement: top tips	09:00 10:00 15:00	30 minutes	Centenary Building (Building 100), Room 3023
	09:30 10:30 11:30 13:30 14:30		Centenary Building (Building 100), Room 4013

DROP IN	TIMES	LOCATION*
Future Worlds: visit the University of Southampton's on-campus startup accelerator, helping aspiring student and academic entrepreneurs change the world with their ideas	10:00–16:00	Future Worlds (Building 1)
Southampton University Students' Union (SUSU) and Sport: a chance to discover the opportunities SUSU offers you, meet some of our clubs and societies and chat to our Sports team	10:00–16:00	Students' Union (Building 42), Cinema

TOUR	DESCRIPTION	TIMES	LOCATION*
Highfield Campus	Led by a current student, get familiar with the sights and amenities of our main campus, and discover what your life would be like as a student at Southampton. Tours take around 30 minutes and are on foot	10:00–16:00	Marquee on the green outside Building 38
Hartley Library	Explore our main University Library, home to the University Archives and Special Collections. Tours are self-guided and take around 15 minutes	10:00–16:00	Hartley Library (Building 12)
Sports Centre	Look around our onsite sports centre which houses a 25-metre swimming pool and a 170-station fitness suite. Tours are self-guided; follow the footsteps from the main reception	10:00–16:00	Jubilee Sports Centre (Building 18)
Wessex Lane halls of residence	Take a self-guided stroll around one of our larger accommodation sites and see examples of self-catered non-ensuite and ensuite rooms. Staff and student helpers will be available onsite if you would like to find out more about the student accommodation experience. Information on travelling to Wessex Lane is available on page 10	11:00–17:00	Wessex Lane halls of residence, Wessex Lane

SUBJECT EVENTS

DETAILS	TIMES	DURATION	LOCATION*
ACCOUNTING AND FINANCE			
Subject talk	10:00 12:00	45 minutes	Centenary Building (Building 100), Level 4, Harvard Lecture Theatre
FinLab drop in: explore how the Bloomberg terminal brings together real-time market data, breaking news, and powerful analytics	09:00–16:00		Murray Building (Building 58), Room 1053
ACOUSTICAL ENGINEERING			
Subject talk and tour	11:00 13:15	90 minutes (45-minute talk, 45-minute tour)	Tizard Building (Building 13), Room 3021
Talk: Which engineering subject should I study?	09:45 11:15 13:15	40 minutes	Building 176, Level 1, Boldwood Innovation Campus , with live webcast to Eustice Building (Building 5), Level 2, Highfield Campus
Visit engineering facilities at Highfield Campus	10:00–16:00		Details available from subject hub O
Visit engineering facilities at Boldwood Innovation Campus	10:00–16:00		
<i>Actuarial Science: for Mathematics with Actuarial Science see Mathematics; for Economics with Actuarial Science see Economics.</i>			
AERONAUTICS AND ASTRONAUTICS			
Subject talk	10:45 12:45 14:45	45 minutes	Lanchester Building (Building 7), Lecture Theatre A
Talk: Which engineering subject should I study?	09:45 11:15 13:15	40 minutes	Building 176, Level 1, Boldwood Innovation Campus , with live webcast to Eustice Building (Building 5), Level 2, Highfield Campus
Visit engineering facilities at Highfield Campus	10:00–16:00		Details available from subject hub O (Highfield Campus) or subject hub V (Boldwood Innovation Campus)
Visit engineering facilities at Boldwood Innovation Campus	10:00–16:00		
<i>Aerospace Electronic Engineering: see Electrical and Electronic Engineering</i>			
ANCIENT HISTORY			
Subject talk	13:15	45 minutes	Parkes Building (Building 65), Lecture Theatre C, Avenue Campus
Tour of Avenue Campus	10:00–16:00	20 minutes	Campus Tour gazebo, Avenue Campus
Admissions advice	10:00–16:00		Parkes Building (Building 65), South Corridor, Avenue Campus
Experience Digital Humanities facilities	10:30–15:30		Parkes Building (Building 65), Room 2155, Avenue Campus

*Activities listed are on Highfield Campus unless otherwise specified

DETAILS	TIMES	DURATION	LOCATION*
ARCHAEOLOGY			
Subject talk and tour	11:15 14:15	60 minutes (30-minute talk, 30-minute tour)	Parkes Building (Building 65), Lecture Theatre C, Avenue Campus
Tour of Avenue Campus	10:00–16:00	20 minutes	Campus Tour gazebo, Avenue Campus
Admissions advice	10:00–16:00		Parkes Building (Building 65), South Corridor, Avenue Campus
Demonstration	10:00–16:00		Archaeology Building (Building 65A), lawn, Avenue Campus
Experience Digital Humanities facilities	10:30–15:30		Parkes Building (Building 65), Room 2155, Avenue Campus
AUDIOLOGY			
Subject talk and tour	11:30	60 minutes (40-minute talk, 20-minute tour)	Tizard Building (Building 13), Room 3019
<i>Biochemistry: see Biological Sciences</i>			
<i>Biology: see Biological Sciences</i>			
BIOLOGICAL SCIENCES (Includes Biology, Biochemistry, Biomedical Sciences, Neuroscience, Pharmacology and Zoology)			
Subject talk	10:45 13:15	50 minutes	EEE Building (Building 32), Lecture Theatre
Biological Sciences lab demonstrations	10:00 – 16:00 (tours leaving every 20 minutes)		Tours start from subject hub D
BIOMEDICAL ENGINEERING			
Subject talk and lab tour	11:30 13:30	60 minutes (30-minute talk, 30-minute tour)	Life Sciences Building (Building 85), Room 2207
Talk: Which engineering subject should I study?	09:45 11:15 13:15	40 minutes	Building 176, Level 1, Boldrewood Innovation Campus , with live webcast to Eustice Building (Building 5), Level 2, Highfield Campus
Visit engineering facilities at Highfield Campus	10:00–16:00		Details available at subject hub R
<i>Biomedical Sciences: see Biological Sciences</i>			
BUSINESS			
Subject talk (Business Management)	12:00 14:15	45 minutes	Centenary Building (Building 100), Lecture Theatre A
Subject talk (Business Analytics)	13:45	45 minutes	Centenary Building (Building 100), Room 5013
Subject talk (Business Entrepreneurship)	13:15	45 minutes	Centenary Building (Building 100), Room 5015
FinLab drop in: explore how the Bloomberg terminal brings together real-time market data, breaking news, and powerful analytics	09:00–16:00		Murray Building (Building 58), Room 1053

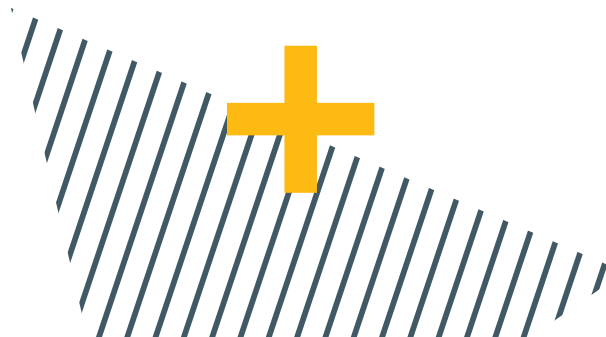
DETAILS	TIMES	DURATION	LOCATION*
CARDIAC PHYSIOLOGY (HEALTHCARE SCIENCE)			
Subject talk	10:00 12:00 14:00	45 minutes	Nightingale Building (Building 67), Room 1001
Skills drop in	10:00 – 16:00		Nightingale Building (Building 67), Level 2
Admissions advice	10:00 – 16:00		Nightingale Building (Building 67), Room 2047
CHEMICAL ENGINEERING			
Subject talk	10:30 12:00 13:30	30 minutes	Chemistry Building (Building 27), Room 2001
Department tour	09:30 – 15:00 (tours every 30 minutes)	30 minutes	Graham Hills Building (Building 29), Room 2067, Chemistry Common Room, or join a tour leaving after the subject talk
Visit engineering facilities at Highfield Campus	10:00–16:00		Details available from subject hub O
Visit engineering facilities at Boldrewood Innovation Campus	10:00–16:00		
CHEMISTRY			
Subject talk	10:30 11:30 13:00 14:00	30 minutes	Graham Hills Building (Building 29), Lecture Theatre
Department tour	10:00 – 15:00 (tours every 30 minutes)	30 minutes	Graham Hills Building (Building 29), Room 2067, Chemistry Common Room
CIVIL ENGINEERING			
Subject talk	10:30 12:30 14:30	30 minutes	Building 178, Level 2, Boldrewood Innovation Campus
Talk: Which engineering subject should I study?	09:45 11:15 13:15	40 minutes	Building 176, Level 1, Boldrewood Innovation Campus , with live webcast to Eustice Building (Building 5), Level 2, Highfield Campus
Visit engineering facilities at Boldrewood Innovation Campus	10:00–16:00		Details available from subject hub V (Boldrewood Innovation Campus)
COMPUTER SCIENCE AND SOFTWARE ENGINEERING			
Overview of degrees in electronics and computer science	10:30 14:30	50 minutes	Turner Sims Concert Hall (Building 52)
Talk: Which engineering subject should I study?	09:45 11:15 13:15	40 minutes	Building 176, Level 1, Boldrewood Innovation Campus , with live webcast to Eustice Building (Building 5), Level 2, Highfield Campus
Taster lecture (topics available at subject hub N)	Details available at subject hub N	30 minutes	The Annex (Building 2A), Lecture Theatre J
Careers and employability talk	12:00 13:00	30 minutes	Mountbatten Building (Building 53), Room 4025
Computing lab tour	09:30–12:00 13:00–15:30	30 minutes	Please enquire at subject hub N, where tours will start from. Tours running frequently

DETAILS	TIMES	DURATION	LOCATION*
CRIMINOLOGY			
Subject talk (joint talk with Sociology)	10:00 13:30	45 minutes	Murray Building (Building 58), Murray Lecture Theatre
ECONOMICS			
Subject talk	09:30 12:15 14:00	45 minutes	The Annex (Building 2A), Lecture Theatre H
FinLab drop in: explore how the Bloomberg terminal brings together real-time market data, breaking news, and powerful analytics	09:00–16:00		Murray Building (Building 58), Room 1053
EDUCATION/EDUCATION AND PSYCHOLOGY			
Subject talk	12:30	50 minutes	Education Building (Building 34), Lecture Theatre
ELECTRICAL AND ELECTRONIC ENGINEERING (Includes Aerospace Electronic Engineering, Electrical Engineering, Electronic Engineering and Mechatronic Engineering)			
Overview of degrees in electronics and computer science	10:30 14:30	50 minutes	Turner Sims Concert Hall (Building 52)
Talk: Which engineering subject should I study?	09:45 11:15 13:15	40 minutes	Building 176, Level 1, Boldrewood Innovation Campus , with live webcast to Eustice Building (Building 5), Level 2, Highfield Campus
Taster lecture (topics available at subject hub N)	Times available at subject hub N	30 minutes	The Annex (Building 2A), Lecture Theatre J
Careers and employability talk	12:00 13:00	30 minutes	Mountbatten Building (Building 53), Room 4025
Teaching lab tour	09:30–12:00 13:00–15:30	30 minutes	Please enquire at subject hub N, where tours will start from. Tours running frequently
High Voltage Lab and Electric Power Engineering tour and demo	11:30 12:30 13:30 15:30	30 minutes	Entrance to High Voltage Laboratory (Building 20)
ENGLISH			
Subject talk	11:15 13:15	45 minutes	Parkes Building (Building 65), Lecture Theatre A, Avenue Campus
Tour of Avenue Campus	10:00–16:00	20 minutes	Campus Tour gazebo, Avenue Campus
Admissions advice	10:00–16:00		Parkes Building (Building 65), South Corridor, Avenue Campus
Experience Digital Humanities facilities	10:30–15:30		Parkes Building (Building 65), Room 2155, Avenue Campus

English Language and Linguistics: those interested in this course should attend the Modern Languages and Linguistics subject talk

DETAILS	TIMES	DURATION	LOCATION*
ENVIRONMENTAL GEOSCIENCE			
Subject talk	11:30 15:00	45 minutes	National Oceanography Centre (Building 68), Charnock Lecture Theatre, National Oceanography Centre Southampton (NOCS)
Drop in	09:30–17:00		National Oceanography Centre (Building 68) Level 4, area outside seminar room, National Oceanography Centre Southampton (NOCS)
Tours and demonstrations	09:30–16:00	60 minutes	National Oceanography Centre (Building 68) Level 4, area outside seminar room, National Oceanography Centre Southampton (NOCS)
ENVIRONMENTAL SCIENCE			
Subject talk	10:15 11:30 13:45	45 minutes	Shackleton Building (Building 44), Lecture Theatre B
Taster lectures	12:45	40 minutes	Shackleton Building (Building 44), Lecture Theatre B
FILM STUDIES			
Subject talk	10:15 12:15	45 minutes	Parkes Building (Building 65), Lecture Theatre C, Avenue Campus
Tour of Avenue Campus	10:00–16:00	20 minutes	Campus Tour gazebo, Avenue Campus
Admissions advice	10:00–16:00		Parkes Building (Building 65), South Corridor, Avenue Campus
Experience Digital Humanities facilities	10:30–15:30		Parkes Building (Building 65), Room 2155, Avenue Campus
FINANCE AND FINANCIAL TECHNOLOGY			
Subject talk	13:00	45 minutes	Centenary Building (Building 100), Harvard Lecture Theatre
FinLab drop in: explore how the Bloomberg terminal brings together real-time market data, breaking news, and powerful analytics	09:00–16:00		Murray Building (Building 58), Room 1053
FOUNDATION YEAR (ENGINEERING, MATHEMATICS, PHYSICS)			
Talk: Which engineering subject should I study?	09:45 11:15 13:15	40 minutes	Building 176, Level 1, Boldrewood Innovation Campus , with live webcast to Eustice Building (Building 5), Level 2, Highfield Campus
Drop in	10:00–16:00		Subject hub O
FOUNDATION YEAR: SCIENCE (BIOLOGY, CHEMISTRY, MATHEMATICS)			
Subject talk and tour	13:30	60 minutes	Chemistry Building (Building 27), Room 2003
GEOGRAPHY			
Subject talk	10:30 11:30 12:30	40 minutes	Shackleton Building (Building 44), Lecture Theatre A
Lab tours	10:00–14:30		Details available at subject hub B

*Activities listed are on Highfield Campus unless otherwise specified



DETAILS	TIMES	DURATION	LOCATION*
GEOLOGY			
Subject talk	11:30 15:00	45 minutes	National Oceanography Centre (Building 68), Charnock Lecture Theatre, National Oceanography Centre Southampton (NOCS)
Drop in	09:30–17:00		National Oceanography Centre (Building 68) Level 4, area outside seminar room, National Oceanography Centre Southampton (NOCS)
Tours and demonstrations	09:30–16:00	60 minutes	National Oceanography Centre (Building 68) Level 4, area outside seminar room, National Oceanography Centre Southampton (NOCS)
HISTORY			
Subject talk	10:15 12:15 14:15	45 minutes	Parkes Building (Building 65), Lecture Theatre A, Avenue Campus
Tour of Avenue Campus	10:00–16:00	20 minutes	Campus Tour gazebo, Avenue Campus
Admissions advice	10:00–16:00		Parkes Building (Building 65), South Corridor, Avenue Campus
Experience Digital Humanities facilities	10:30–15:30		Parkes Building (Building 65), Room 2155, Avenue Campus
LAW			
Subject talk (includes subject talk, taster lecture and student experience talk)	10:45 13:00	60 minutes	Centenary Building (Building 100), Lecture Theatre A
Tours of the Law School	10:00–16:00		Details available at subject hub J
MARINE BIOLOGY			
Subject talk	10:00 13:30 16:00	45 minutes	National Oceanography Centre (Building 68), Charnock Lecture Theatre, National Oceanography Centre Southampton (NOCS)
Drop in	09:30–17:00		National Oceanography Centre (Building 68) Level 4, area outside seminar room, National Oceanography Centre Southampton (NOCS)
Tours and demonstrations	09:30–16:00	60 minutes	National Oceanography Centre (Building 68) Level 4, area outside seminar room, National Oceanography Centre Southampton (NOCS)
MARKETING			
Subject talk	11:00 14:00	45 minutes	Centenary Building (Building 100), Harvard Lecture Theatre

DETAILS	TIMES	DURATION	LOCATION*
MATHEMATICAL SCIENCES			
Subject talk (BSc and MMath Mathematics programmes)	11:00 13:30	45 minutes	Mathematical Sciences Building (Building 54), Lecture Theatre 4A
Subject talk (MMath Mathematical Physics)	12:45	30 minutes	Mathematical Sciences Building (Building 54), Lecture Theatre 7B
Taster lecture	12:00 14:30	30 minutes	Mathematical Sciences Building (Building 54), Lecture Theatre 4A
MECHANICAL ENGINEERING			
Subject talk	09:45 11:45 13:45	45 minutes	Lanchester Building (Building 7), Lecture Theatre A
Talk: Which engineering subject should I study?	09:45 11:15 13:15	40 minutes	Building 176, Level 1, Boldrewood Innovation Campus , with live webcast to Eustice Building (Building 5), Level 2, Highfield Campus
Visit engineering facilities at Highfield Campus	10:00–16:00		Details available from subject hub O (Highfield Campus) or subject hub V (Boldrewood Innovation Campus)
Visit engineering facilities at Boldrewood Innovation Campus	10:00–16:00		
<i>Mechatronic Engineering: see Electrical and Electronic Engineering</i>			
MEDICINE			
Subject talk	09:30 12:00 14:30	45 minutes	EEE Building (Building 32), Lecture Theatre
Admissions advice	10:00–16:00		Subject hub M
MIDWIFERY			
Subject talk	10:00	45 minutes	Nightingale Building (Building 67), Lecture Theatre
	12:00	45 minutes	Nightingale Building (Building 67), Room 1023
Skills drop in	10:00–15:00		Nightingale Building (Building 67), Level 2
Admissions advice	10:00–16:00		Nightingale Building (Building 67), Room 2047
MODERN LANGUAGES AND LINGUISTICS			
Subject talk	10:15 12:15 15:15	45 minutes	Parkes Building (Building 65), Lecture Theatre B, Avenue Campus
Tour of Avenue Campus	10:00–16:00	20 minutes	Campus Tour gazebo, Avenue Campus
Admissions advice	10:00–16:00		Parkes Building (Building 65), South Corridor, Avenue Campus
Experience Digital Humanities facilities	10:30–15:30		Parkes Building (Building 65), Room 2155, Avenue Campus
MUSIC			
Subject talk	11:00 14:00	45 minutes	Building 2, Room 3043
Tour of facilities	10:30–15:30		Building 2, Music department
NATURAL SCIENCES			
Subject talk	10:00	30 minutes	Life Sciences Building (Building 85), Room 2207
<i>Neuroscience: see Biological Sciences</i>			

DETAILS	TIMES	DURATION	LOCATION*
NURSING			
Subject talk	11:00 13:00	45 minutes	Nightingale Building (Building 67), Lecture Theatre
Skills drop in	10:00–15:00		Nightingale Building (Building 67), Level 2
Admissions advice	10:00–16:00		Nightingale Building (Building 67), Room 2047
OCCUPATIONAL THERAPY			
Subject talk	11:00	45 minutes	Nightingale Building (Building 67), Room 1023
Personal Statement workshop	13:00	60 minutes	Nightingale Building (Building 67), Room 1023
Skills drop in	10:00–15:00		Nightingale Building (Building 67), Level 2
Admissions advice	10:00–16:00		Nightingale Building (Building 67), Room 2047
OCEANOGRAPHY			
Subject talk	10:00 13:30 16:00	45 minutes	National Oceanography Centre (Building 68), Charnock Lecture Theatre, National Oceanography Centre Southampton (NOCS)
Drop in	09:30–17:00		National Oceanography Centre (Building 68) Level 4, area outside seminar room, National Oceanography Centre Southampton (NOCS)
Tours and demonstrations	09:30–16:00	60 minutes	National Oceanography Centre (Building 68) Level 4, area outside seminar room, National Oceanography Centre Southampton (NOCS)
<i>Pharmacology: see Biological Sciences</i>			
PHILOSOPHY			
Subject talk	11:15 14:15	45 minutes	Parkes Building (Building 65), Lecture Theatre B, Avenue Campus
Tour of Avenue Campus	10:00–16:00	20 minutes	Campus Tour gazebo, Avenue Campus
Admissions advice	10:00–16:00		Parkes Building (Building 65), South Corridor, Avenue Campus
Experience Digital Humanities facilities	10:30–15:30		Parkes Building (Building 65), Room 2155, Avenue Campus
PHYSICS AND ASTRONOMY			
Subject talk	10:30 13:30	30 minutes	Physics Building (Building 46), Lecture Theatre A
Women in Physics talk	11:20 14:20	30 minutes	Physics Building (Building 46), Lecture Theatre B
Careers talk	12:10 15:10	30 minutes	Physics Building (Building 46), Lecture Theatre B
Tour of building and labs	10:00–16:00	30 minutes	Starting from subject hub F
Try out a lab experiment (limited places available, book your place on the day)	12:00 13:00 14:00 15:00		Starting from subject hub F
Solar observations	10:00–16:00		Subject hub F
Particle Physics challenge	10:00–16:00		Physics Building (Building 46), foyer

DETAILS	TIMES	DURATION	LOCATION*
PHYSIOTHERAPY			
Subject talk	12:00 14:00	50 minutes	Nightingale Building (Building 67), Lecture Theatre
Skills drop in	10:00–15:00		Nightingale Building (Building 67), Level 2
Admissions advice	10:00–16:00		Nightingale Building (Building 67), Room 2047
PODIATRY			
Subject talk	13:00	45 minutes	Nightingale Building (Building 67), Room 2043
Skills drop in	10:00–15:00		Nightingale Building (Building 67), foyer
Admissions advice	10:00–16:00		Nightingale Building (Building 67), Room 2047
POLITICS AND INTERNATIONAL RELATIONS			
Subject talk	11:00 14:30	50 minutes	Murray Building (Building 58), Murray Lecture Theatre
POPULATION SCIENCES (PREVIOUSLY POPULATION AND GEOGRAPHY)			
Subject talk	13:30	50 minutes	Murray Building (Building 58), Lecture Room C
PSYCHOLOGY			
Subject talk	11:30 13:30	40 minutes	Turner Sims Concert Hall (Building 52)
SHIP SCIENCE			
Subject talk	11:00 14:00	30 minutes	Building 185, Level 3, Boldwood Innovation Campus
Talk: Which engineering subject should I study?	09:45 11:15 13:15	40 minutes	Building 176, Level 1, Boldwood Innovation Campus , with live webcast to Eustice Building (Building 5), Level 2, Highfield Campus
Visit engineering facilities at Highfield Campus	10:00–16:00		Details available at subject hub V (Boldwood Innovation Campus)
Visit engineering facilities at Boldwood Innovation Campus	10:00–16:00		
SOCIOLOGY			
Subject talk (joint talk with Criminology)	10:00 13:30	45 minutes	Murray Building (Building 58), Murray Lecture Theatre
<i>Zoology: see Biological Sciences</i>			



Find out more:

www.southampton.ac.uk/consider

UK enquiries:

enquiry@southampton.ac.uk

+44 (0)23 8059 9699

International enquiries:

international@southampton.ac.uk

+44 (0)23 8059 9699



Disclaimer

This document is for information purposes only and is prepared well in advance of publication. While the University of Southampton uses all reasonable efforts to ensure that all statements, information and data contained in this document are accurate as at the date of publication, it reserves the right to make revisions or modifications to such statements, information or data at any time and without notice. Under no circumstances shall the University be liable for any reliance by the reader on any information in this document.

© University of Southampton 2022

This document can be made available, on request, in alternative formats such as electronic, large print, Braille or audio tape, and in some cases, other languages.



When finished with this document please recycle it.